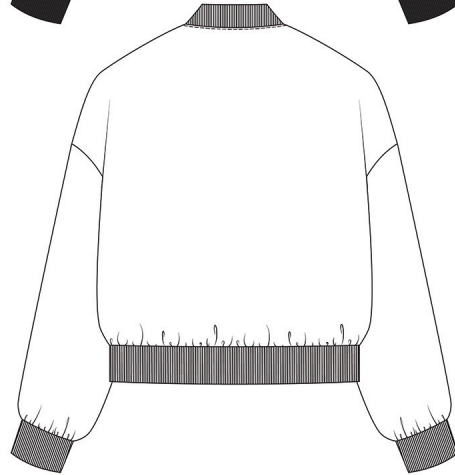
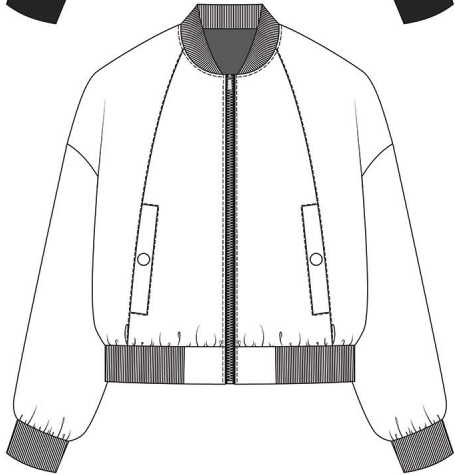


# STYLE#JKT-5647

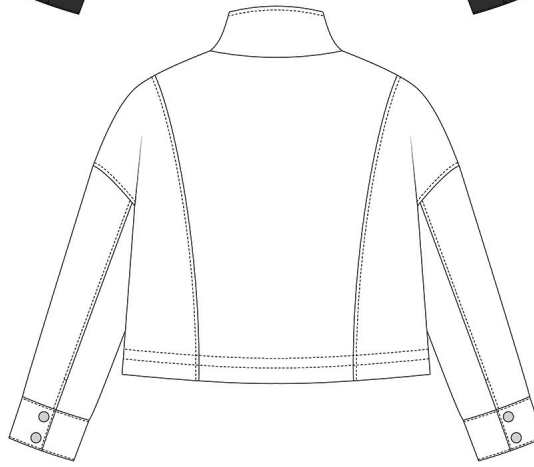


[RAVEN@RAVENMOXON.COM](mailto:RAVEN@RAVENMOXON.COM)

# STYLE#JKT-5641



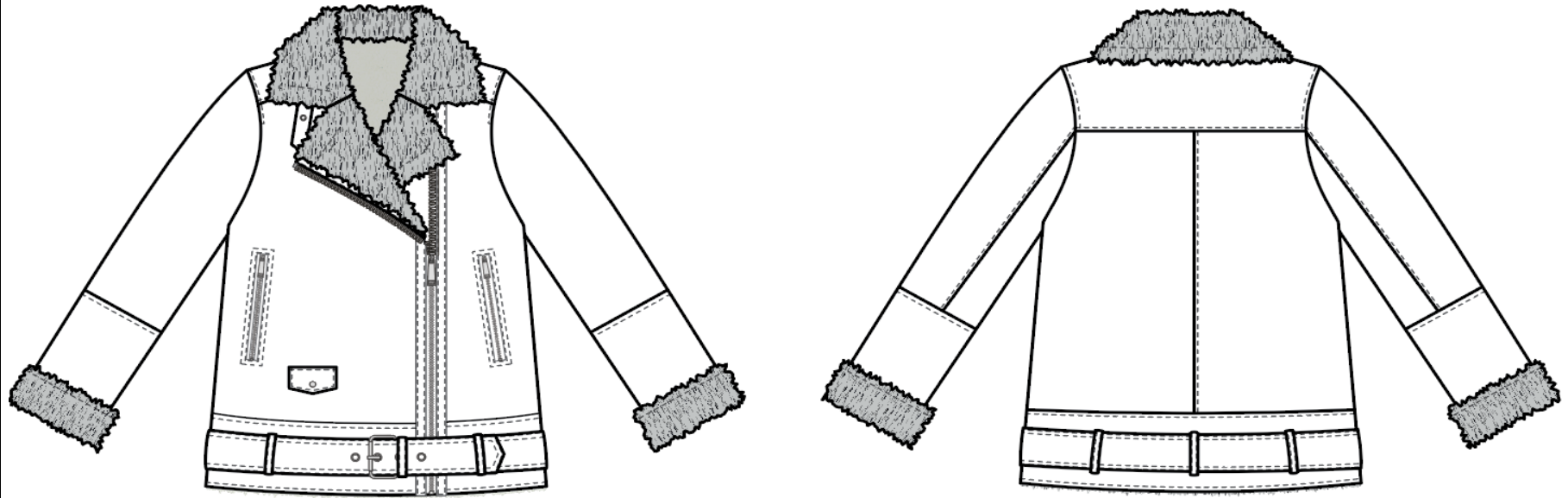
# STYLE#JKT-5640

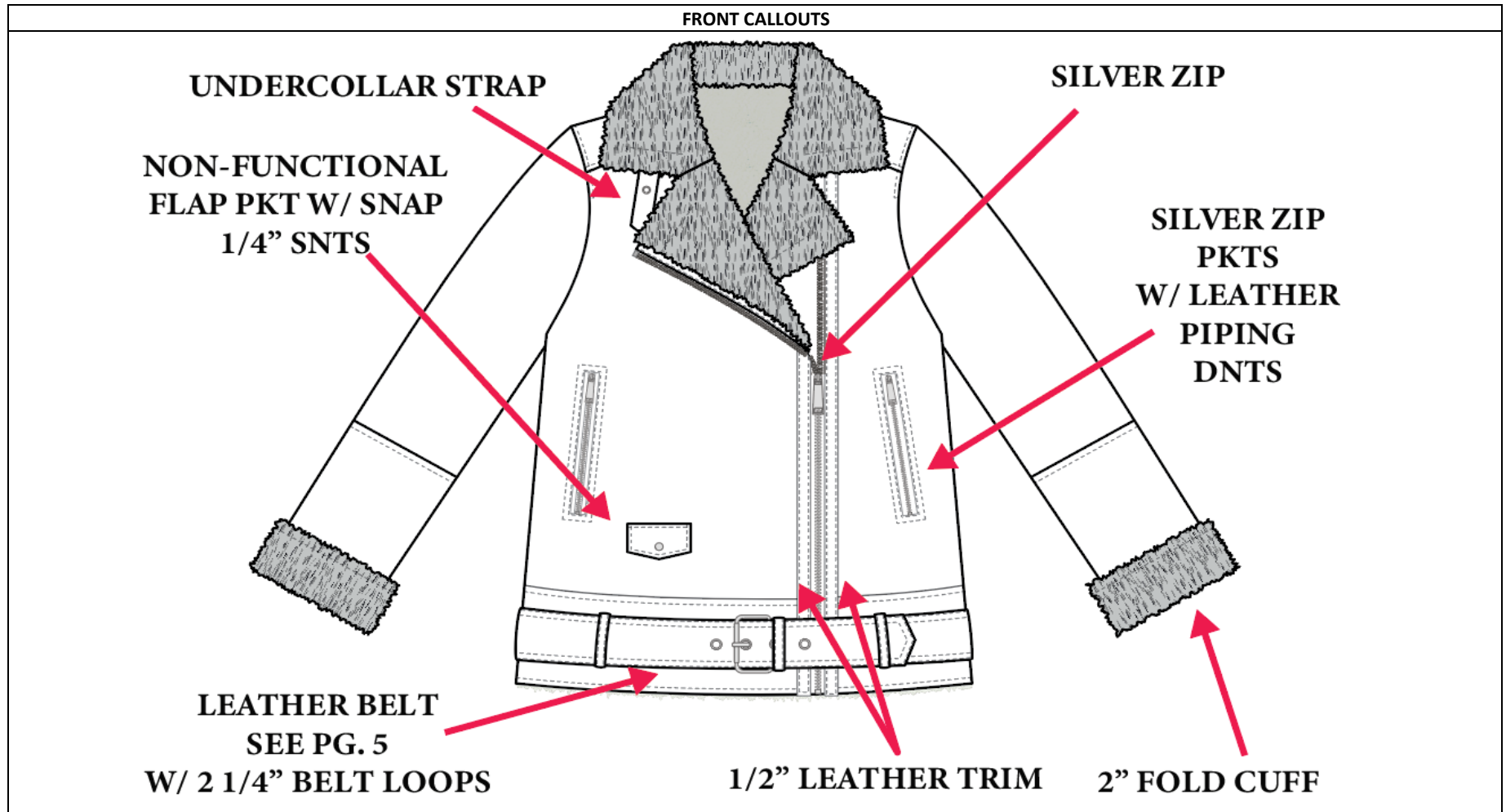


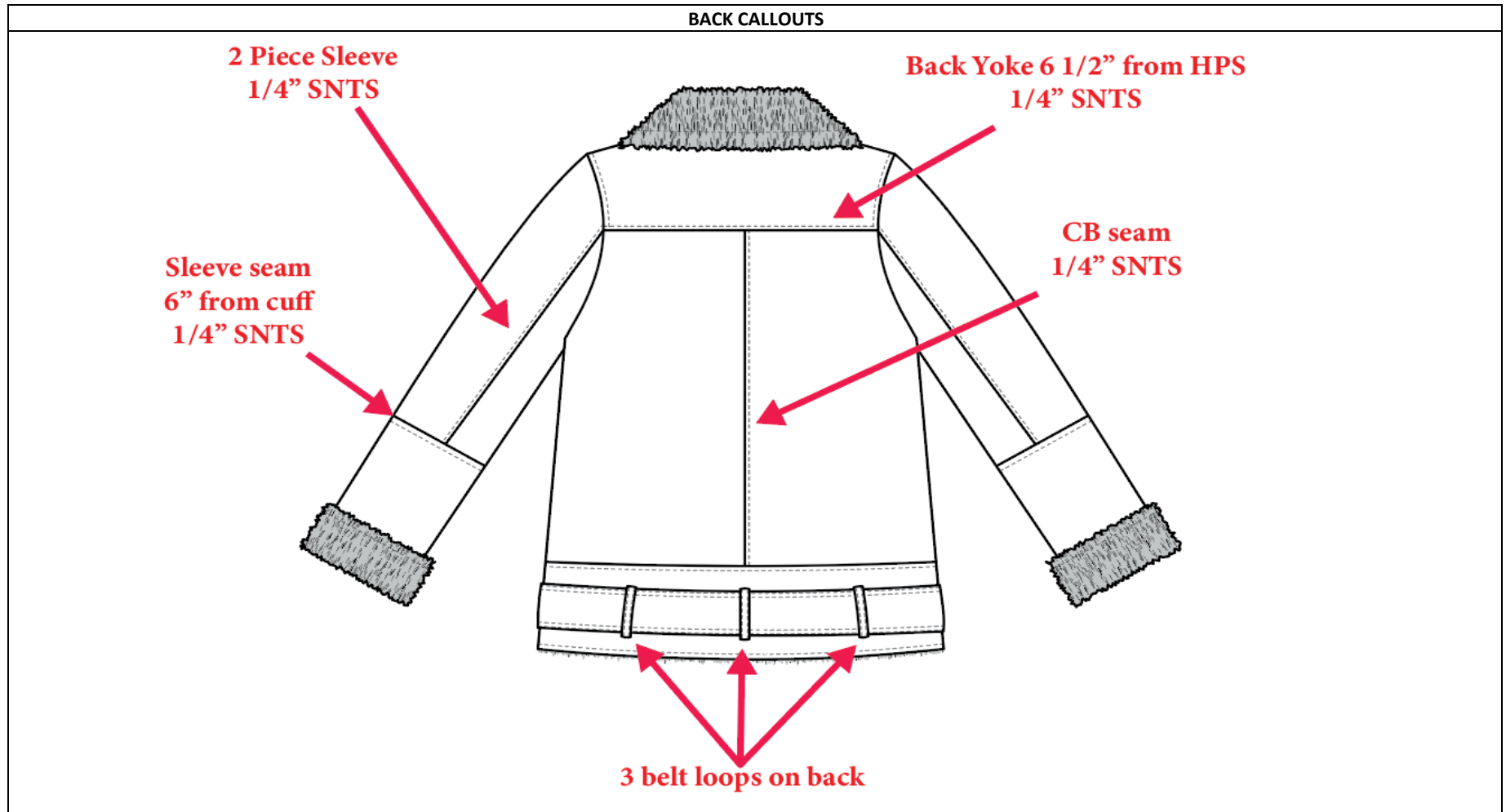
VENDOR	YG			
COO	China			
CREATED BY	Raven Moxon			



FRONT / BACK SKETCH

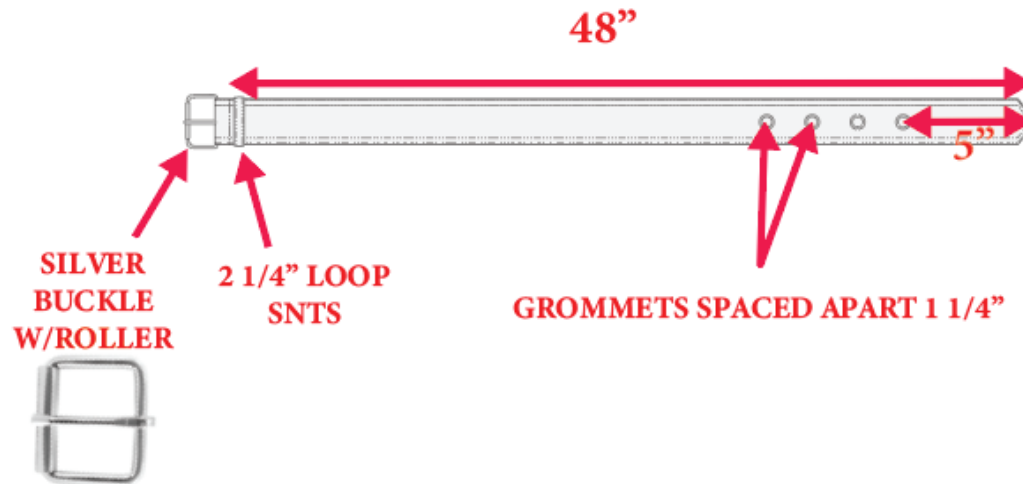






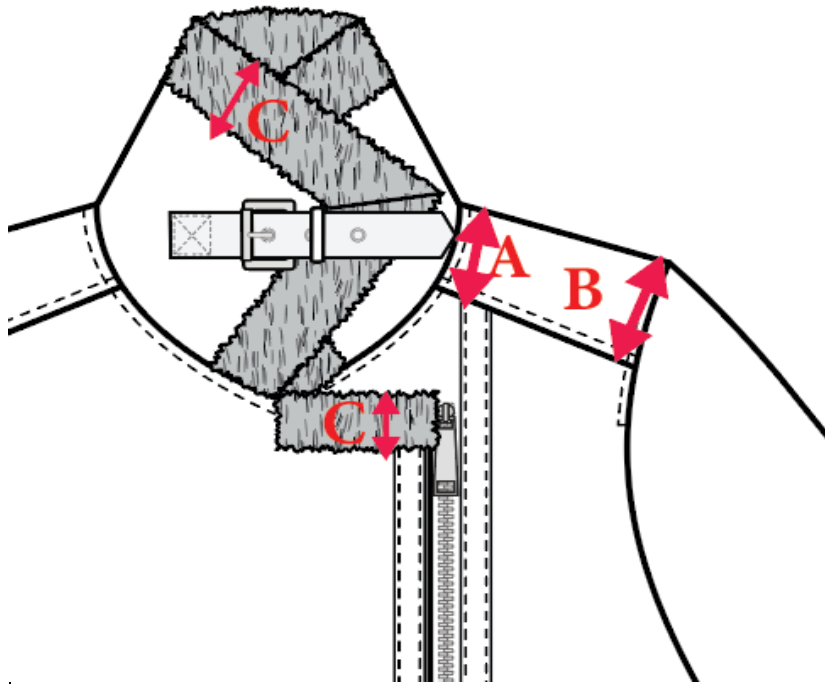
BELT DETAILS

**RAW EDGE LEATHER BELT  
W/1/4" DBNTS  
2" WIDE 48" LONG**





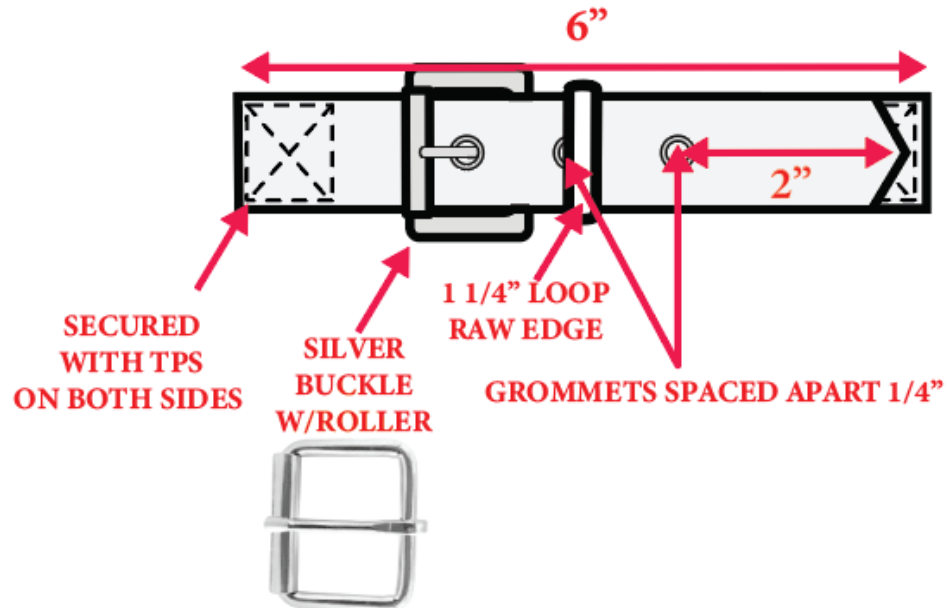
UNDERCOLLAR DETAILS



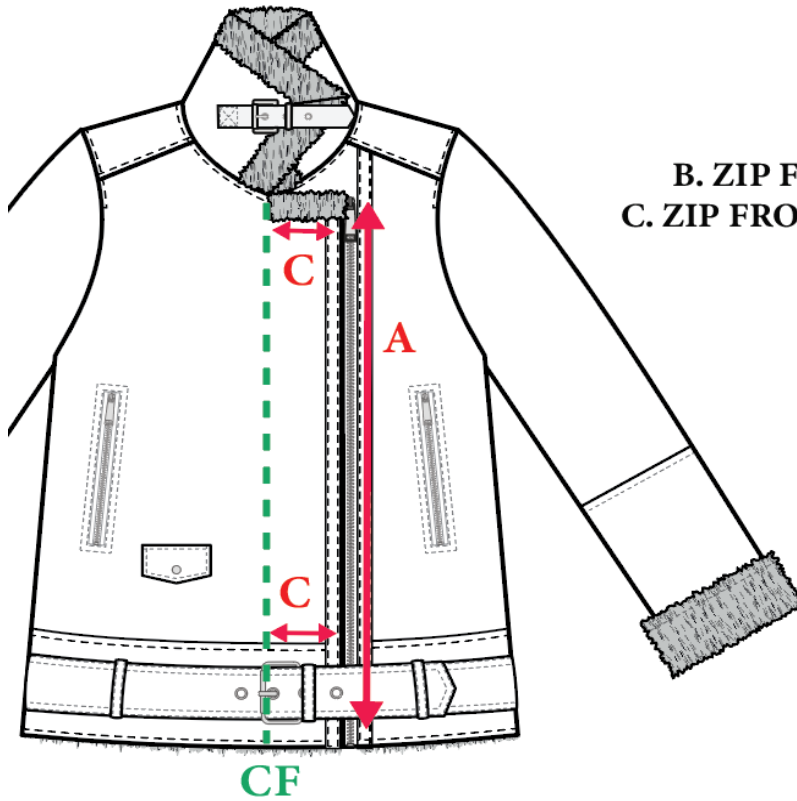
- A. SHOULDER PANEL AT NECK 2 1/2"
- B. SHOULDER PANEL AT AH 3"
- C. WIDTH UNDER COLLAR/LAPEL 1 1/2"

UNDERCOLLAR STRAP DETAILS

**RAW EDGE UNDERCOLLAR STRAP  
1" WIDE 6" LONG**



ZIPPER

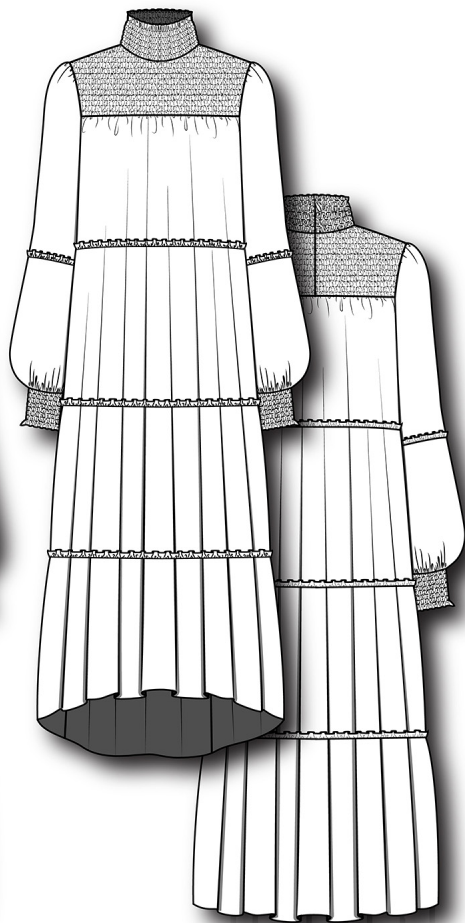


- A. ZIP LENGTH 25"
- B. ZIP FROM CF AT LAPEL POINT 5"
- C. ZIP FROM CF AT BOTTOM BAND 4 1/2"

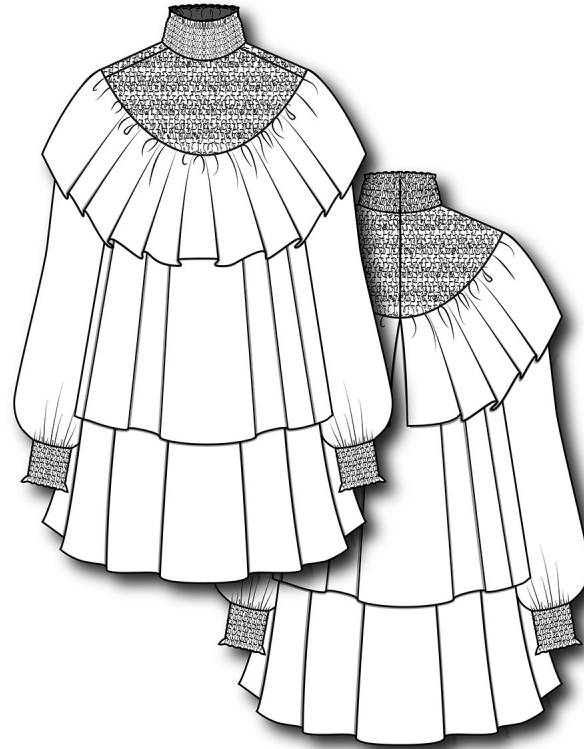
FABRICS						COLORWAYS
TYPE	DESC.	FINISHES	CONTENT	WEIGHT	CONSTRUCTION	Beige
BODY FABRIC	Faux Fur Shearling		60% PU 40% Poly	600GSM		Beige
Faux Leather	Use faux fur shearling, unbonded					Match Body
TRIMS						COLORWAYS
TYPE	DESC.	PLACEMENT		SIZE	Beige	
ZIPPER	Metal zipper	Front body		25"	Silver	
Zipper	Metal zipper	Pockets		6"	Silver	
ZIPPER PULL	Standard Metal Pull	All Zippers			Silver	
Snap Button	Standard Metal Snap	Front pocket		8mm	Silver	
Grommets	Metal grommets	Belt at waist		20mm	Silver	
Undercollar Grommets	Metal grommets	Strap underneath collar		12mm	Silver	
Buckle	Metal buckle w/roller	Belt at waist		2"	Silver	
Undercollar Buckle	Metal buckle w/roller	Strap underneath collar		1"	Silver	
THREAD	100% Poly	All interior seams		TEX-135	Match Body	
EXTERIOR THREAD	100% Poly	All top stitching including belts and pockets		TEX-250	Match Body	
LABELS/HANGTAGS/PACKAGING						COLORWAYS
TYPE	DESC.	PLACEMENT	QTY	SIZE	Beige	
INTERIOR LABEL	Brand Logo + Size underneath	CB	1	2" x 2"	White	
CARE LABEL	Fiber contents + Care Instructions +	Side Seam Wearer's left side	1	1 1/2" x 1 1/4"	White	
MAIN HANGTAG		Cuff, wearer's left side	1	2 1/4" x 4"	White	
UPC LABEL		Cuff with main hangtag	1	1 1/2" x 2 3/4"	White	

STYLE # JKT-5647	Original SPEC REQ.	Proto Meas	To be Fixed	FINAL SPEC	GRADE RULES	Graded Spec				
						XS	S	M	L	XL
<b>POINT OF MEASURE</b>										
C.B. Length	29 3/4	28 3/8	Add 1 3/8	29 3/4	1/2	29 1/4	29 3/4	30 1/4	30 3/4	31 1/4
FRONT LENGTH( HPS TO BOTTOM)	29 1/2	28 1/8	Add 1 3/8	29 1/2	1/2	29	29 1/2	30	30 1/2	31
ACROSS SHOULDER	17	16 1/4	Add 1/4"	16 1/2	1/2,5/8,3/4	16	16 1/2	17	17 5/8	18 3/8
SHOULDER SLOPE	3	3	as sample	3		3	3	3	3	3
WIDTH AT BACK YOKE(6 1/2" FROM HPS)	16	15 1/4	Add 3/4"	16	1/2,5/8,3/4	15 1/2	16	16 1/2	17 1/8	17 7/8
ACROSS FRONT 5" DOWN	15	14 1/2	Add 1/2"	15	1/2,5/8,3/4	14 1/2	15	15 1/2	16 1/8	16 7/8
BUST 1" BELOW ARMHOLE	20 1/2	19 1/2	Add 1/2"	20	1, 1.25, 1.5	19	20	21	22 1/4	23 3/4
WAIST FROM HPS 15.5 DOWN	21	20	Add 1/2"	20 1/2	1, 1.25, 1.5	19 1/2	20 1/2	21 1/2	22 3/4	24 1/4
BOTTOM OPENING STRAIGHT	21 1/2	20 1/2	Add 1/2"	21	1, 1.25, 1.5	20	21	22	23 1/4	24 3/4
SLEEVE LENGTH FROM SHOULDER SEAM (include cuff)	24 1/2	24	Add 1"	25	1/4	24 3/4	25	25 1/4	25 1/2	25 3/4
ARMHOLE STRAIGHT	9	9	Add 1/4"	9 1/4	1/2,5/8,3/4	8 3/4	9 1/4	9 3/4	10 3/8	11 1/8
MUSCLE WIDTH 1" BELOW ARMHOLE	7 1/2	7 1/2	Add 1/8	7 5/8	5/16,3/8,7/16	7 1/4	7 5/8	8	8 3/8	8 3/4
SLEEVE SEAM (6" FROM CUFF)	6 1/2		as sample	6 1/2	1/4,5/16,3/8	6 1/4	6 1/2	6 3/4	7	7 1/4
SLEEVE OPENING	6	6	as sample	6	1/2	5 3/4	6	6 1/4	6 1/2	6 3/4
SLEEVE CUFF HT	2	2	as sample	2		2	2	2	2	2
FRONT NECK DROP	4	3 3/8	Add 5/8	4	1/8	3 7/8	4	4 1/8	4 1/4	4 3/8
BACK NECK DROP	3/4	1/2	as sample	1/2		1/2	1/2	1/2	1/2	1/2
BACK NECK WIDTH	9	8 3/4	Add 1/4"	9	1/4, 3/8	8 3/4	9	9 1/4	9 1/2	9 7/8
COLLAR AT CB	5 1/2	5 1/2	as sample	5 1/2		5 1/2	5 1/2	5 1/2	5 1/2	5 1/2
COLLAR POINT	5 1/2	5 1/2	as sample	5 1/2		5 1/2	5 1/2	5 1/2	5 1/2	5 1/2
LAPEL POINT	5		as sample	5		5	5	5	5	5
POCKET FLAP	3 1/2 x 3	3 1/2 x 3	as sample	3 1/2 x 3		3 1/2 x 3	3 1/2 x 3	3 1/2 x 3	3 1/2 x 3	3 1/2 x 3
ZIP POCKET LENGTH	6	6	as sample	6		6	6	6	6	6
YOKE FROM HPS	6 1/2	6 1/2	as sample	6 1/2		6 1/2	6 1/2	6 1/2	6 1/2	6 1/2
BOTTOM BAND SEAM FROM HPS	25 1/2	25	Add 1/2"	25 1/2	1/2	25	25 1/2	26	26 1/2	27
Flap Pocket From HPS	21	21	as sample	21		21	21	21	21	21

# STYLE#DRS-D1016S



**STYLE#DRS-D1015S**



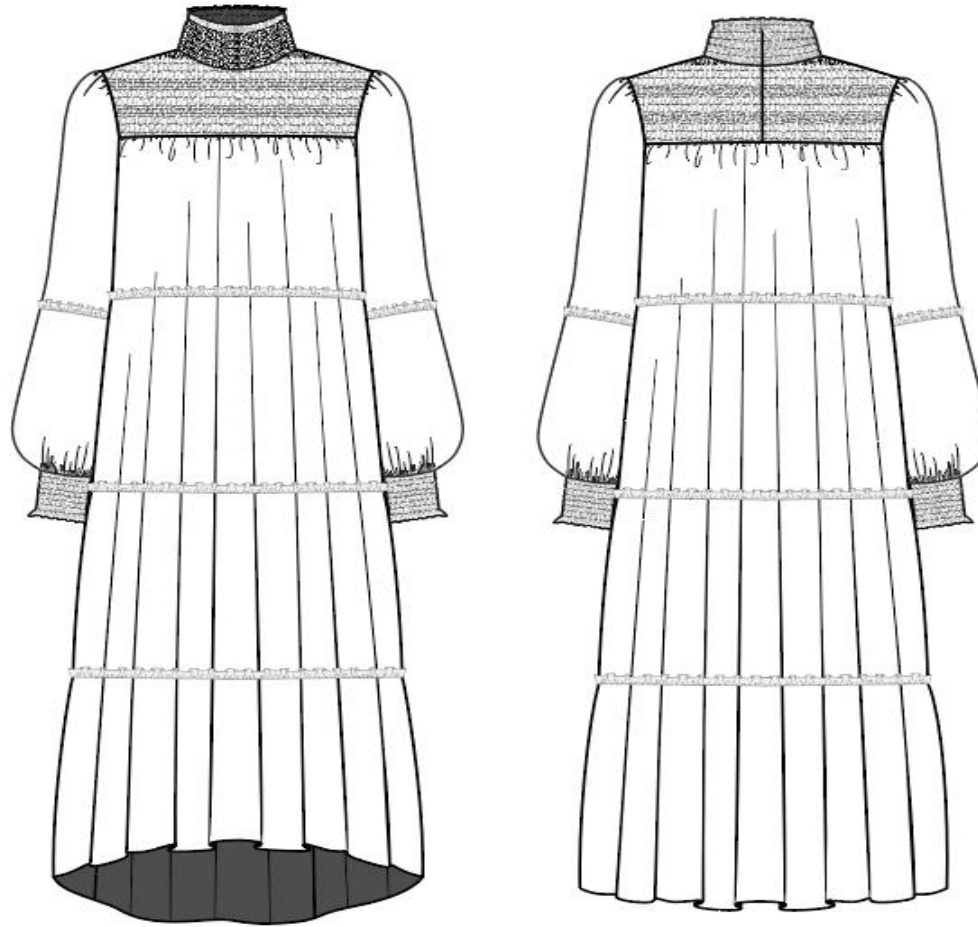
**RAVEN@RAVENMOXON.COM**

VENDOR	Ava			
COO	China			
CREATED BY	Raven Moxon			





FRONT/BACK FLAT



FRONT CALLOUTS

**5 rows of elastic shirring  
Spaced apart 1/4"  
1/2" ruffle at top opening**

**1/4" SPACED  
ELASTIC SHIRRING**

**Sleeve ruffle 17"  
from shoulder seam**

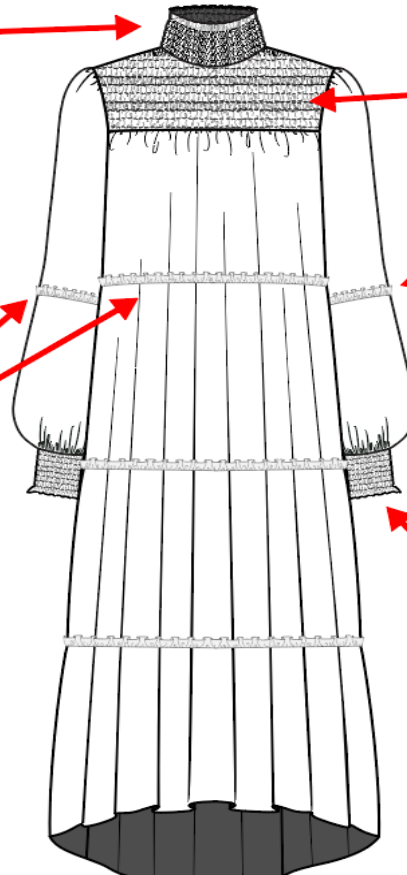
**1/2" RUFFLES**

**All Ruffles 2:1  
Gathering ratio**

**3 1/2" CUFF  
12 rows OF 1/4" SPACED  
ELASTIC SHIRRING  
1/2" RUFFLE AT OPENING**

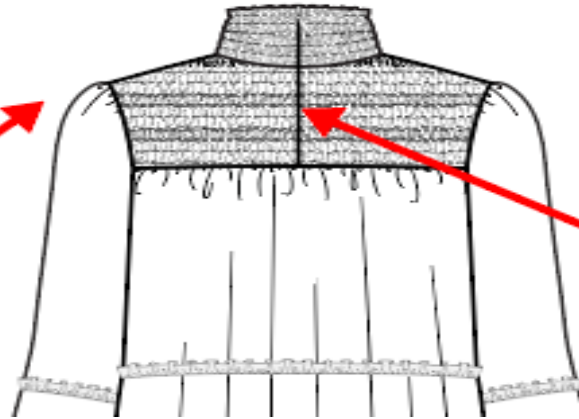


**1/4" clean finish hem**



BACK CALLOUTS

**GATHERED  
SLEEVE CAP**

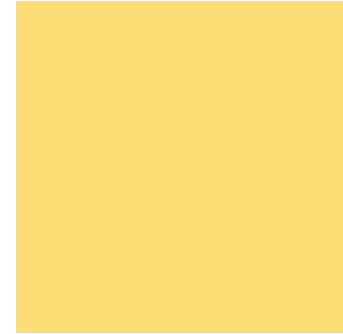


**11" INVISIBLE ZIP AT CB**



7 1/2" x 7 1/2"  
Repeat Print

SEE FULL SCALE ILLUSTRATOR FILE  
FOR REPEATING PATTERN



**PANTONE®**  
12-0739 TSX  
Daisy Floret



**PANTONE®**  
19-1730 TSX  
Carriage Red

FABRICS						COLORWAYS
TYPE	DESC.	FINISHES	CONTENT	WEIGHT	CONSTRUCTION	Yellow
BODY FABRIC	Paisley Print Chiffon		100% Polyester	100GSM		Yellow
TRIMS						COLORWAYS
TYPE	DESC.	PLACEMENT			SIZE	Yellow
ZIPPER	Invisible	Center Back			11"	Yellow
THREAD	100% Poly	All interior seams			TEX-30	Yellow
SHIRRING THREAD	Elastic Shirring Thread	All shirring				Yellow
LABELS/HANGTAGS/PACKAGING						COLORWAYS
TYPE	DESC.	PLACEMENT	QTY	SIZE	Yellow	
INTERIOR LABEL	Brand Logo + Size underneath	CB	1	2" x 1/2"	White	
CARE LABEL	Fiber contents + Care Instructions + RN Number	Side Seam Wearer's left side	1	1 1/2" x 1 1/4"	White	
MAIN HANGTAG		Cuff, wearer's left side	1	2 1/4" x 4"	White	
UPC LABEL		Cuff with main hangtag	1	1 1/2" x 2 3/4"	White	

STYLE # D1016S	Original SPEC REQ.	Proto Meas	To be Fixed	FINAL SPEC	GRADE RULES	Graded Spec				
						XS	S	M	L	XL
POINT OF MEASURE										
BODY LENGTH FROM CB	52	49	Add 3"	52	1	51	52	53	54	55
FRONT_BODY LENGTH _HPS TO BOTTOM	46 1/2	43 1/2	Add 3"	46 1/2	1	45 1/2	46 1/2	47 1/2	48 1/2	49 1/2
First Tier Length	10	10	as sample	10	1/4	9 3/4	10	10 1/4	10 1/2	10 3/4
Second Tier Length	10	10	as sample	10	1/4	9 3/4	10	10 1/4	10 1/2	10 3/4
Third Tier Length	10	10	as sample	10	1/4	9 3/4	10	10 1/4	10 1/2	10 3/4
Fourth Tier Length	10	8	Add 2"	10	1/4	9 3/4	10	10 1/4	10 1/2	10 3/4
Yoke Length from HPS	6 1/2	5 1/2	Add 1"	6 1/2		6 1/2	6 1/2	6 1/2	6 1/2	6 1/2
ACROSS SHOULDER (SEAM TO SEAM)	15	15 1/4	Add 1/4"	15 1/2	1/2,5/8,3/4	15	15 1/2	16	16 5/8	17 3/8
ACROSS BUST 1" BELOW ARMHOLE (	38	38	as sample	38	2, 2 1/2, 3	36	38	40	42 1/2	45 1/2
Bottom Sweep	60	56	Add 4"	60	1, 1.5, 2	59	60	61 1/2	61 1/2	63 1/2
SLEEVE Length frm SHOULDER SEAM	25 1/2	26 1/4	Reduce 1/4	26	1/4	25 3/4	26	26 1/4	26 1/2	26 3/4
ARMHOLE STRAIGHT	7 1/2	9 1/2	Reduce 1"	8 1/2	1/2,5/8,3/4	8	8 1/2	9	9 5/8	10 3/8
MUSCLE WIDTH 1" BELOW ARMHOLE	6	12	as sample	12	5/8,3/4,7/8	11 3/8	12	12 5/8	13 3/8	14 1/4
FOREARM (6" FROM CUFF)	14	14	as sample	14	1/2,5/8,3/4	13 1/2	14	14 1/2	15 1/8	15 7/8
SLEEVE OPENING on edge	6	6	as sample	6	1/2	8 1/4	8 3/4	9 1/4	9 3/4	10 1/4
SLEEVE CUFF HT	3 1/2	3 1/2	as sample	3 1/2		3 1/2	3 1/2	3 1/2	3 1/2	3 1/2
FRONT NECK DROP (HPS TO SEAM)	2 1/2	3	Lower 1/2"	2 1/2	1/4	2 1/4	2 1/2	2 3/4	3	3 1/4
BACK NECK DROP (HPS TO SEAM)	1/2	1/2	as sample	1/2		1/2	1/2	1/2	1/2	1/2
BACK NECK WIDTH (EDGE TO EDGE) STRAIGHT	7 1/2	7	as sample	7	1/4, 3/8	6 3/4	7	7 1/4	7 1/2	7 7/8
Neck Opening	6 1/2	6	Add 1/2"	6 1/2	1/4, 3/8	6 1/4	6 1/2	6 3/4	7	7 3/8
Neck Height	2 1/2	2 1/4	Add 1/4"	2 1/2		2 1/2	2 1/2	2 1/2	2 1/2	2 1/2